

Femoral and tibial pile dark. *Wings*: rather heavily tinged throughout with brown, the stigmal cell quite dark brown, the allulae linear.

Female. Similar to the male; the front has a continuous, diffuse, slender brownish stripe, the dark pubescence is less in evidence upon the scutellum, and the abdominal pattern is very similar.

Holotype: one male, Sao Paulo, Osasco, April 6-8, 1939, J. Lane, collector. Allotype: one female, same data.

A REMARKABLE NEW SPECIES OF THE GENUS PSEUDACTEON (DIPTERA : PHORIDAE).

By CHARLES T. GREENE,

Bureau of Entomology and Plant Quarantine, U. S. Department of Agriculture.

In three genera of the dipterous family Phoridae, *Apocephalus* Coquillett, *Melaloncha* Brues, and *Pseudacteon* Coquillett, all of which are known to occur only in the Western Hemisphere, the female has a large, exerted, horny ovipositor. In the new species described below the ovipositor is exceptionally large, being relatively much broader and deeper than in any of the described species of the three genera.

Pseudacteon grandis, new species.

Female.—Length 1.75 mm. Dark brown. Front about as broad as long, gray dusted, with a shining black, central, vertical stripe which bifurcates and extends narrowly around the ocellar triangle; 4 transverse rows of frontal bristles; first, third, and fourth rows with 4 each; second row with 2, 1 bristle on each outer side; on each side of the front between the first and third rows of frontals 2 vertical rows of very minute hairs, 3 in each row; postantennal pair converging, proclinate. Third antennal segment oval, dark brown, with a narrow ochraceous area along the base and with pale microscopic pubescence; arista one and one-half times as long as third antennal segment, microscopically pubescent. Palpi pale yellow, each with 4 black spines apically; proboscis pale luteous.

Thorax much broader anteriorly, faintly dusted; scutellum with 4 bristles, anterior pair much the smaller; halteres yellowish white; legs pale yellow with brown infuscation on the apical third of hind femur. Wing with third vein simple, ending before middle; second costal area twice as long as third; costal fringe short, only slightly longer than thickness of costal vein.

Abdomen dull brown with last 2 segments edged posteriorly with white and with several bristly hairs on each side. Ovipositor (fig. 1) very broad, shining black, horseshoe shaped, bilobed, with a central process which has 4 bristles apically; across basal portion of arch a transparent colorless membrane, and along the edge a row of 10 small hairs; above this row 2 vertical rows of 4 fine hairs each.

Described from two females.

The type is from Negril Point, Jamaica, Station 583, May 19, 1941, Dr. E. A. Chapin collector. Taken in association with the ant *Solenopsis geminata* (F.), found in a deserted nest of a species of *Nasutitermes*.

The paratype is from State College, Miss., November 22, 1934, Dr. M. R. Smith collector. It was observed attacking the fire ant, *Solenopsis xyloni* McCook.

Type and paratype, United States National Museum No. 53862.

This species runs to *Pseudacteon spatulatum* (Mall.) but differs in the shape and much larger size of the ovipositor.

Note.—The ants were identified by Dr. M. R. Smith, Bureau of Entomology and Plant Quarantine.

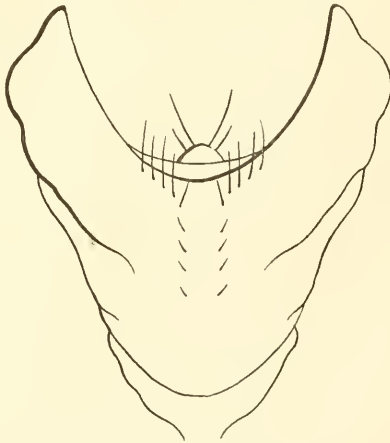


Fig. 1. *Pseudacteon grandis*, postero-dorsal view of ovipositor.

A NEW TAENIOTHRIPS FROM PANAMA (THYSANOPTERA)*

By J. C. CRAWFORD,

U. S. Department of Agriculture, Bureau of Entomology and Plant Quarantine.

Species in the genus *Taeniothrips* which have the fore tarsus apically produced into a clawlike projection are so few in number that a new one, differing widely from those already known, is of interest. It is because of this deviation that the specific name has been selected.

Taeniothrips aberrans, new species.

Holotype female (macropterous).—Length (distended) 1.48 mm. Deep brown, thorax with slight orange tinge and much red pigment, especially in prothorax; femora concolorous with body, knees somewhat lighter brown, tibiae paler than